

Proceedings of International Conference on Basic Science (ICBS) “The Role of Basic Science in Health, Environment, and Advance Technology”

Faculty of Science, University of Brawijaya, Malang, Indonesia
Widyaloka Convention Hall, February, 17 – 18th 2011

Keynote Speakers

1. Assoc. Prof. Spas D. Kolev – University of Melbourne (Australia)
2. Dr. Edgar Paski – British Columbia Institute of Technology (Canada)
3. Prof. Dr. Lukman Hakim – Indonesian Institute of Science (Indonesia)
4. Prof Dr. Ir. Chandrawati Cahyani, MS – University of Brawijaya (Indonesia)

Board of Advisors

Prof. Dr. Ir. Yogi Sugito (UB – Indonesia)
Prof. Dr. Marjono, MPhil (UB – Indonesia)
Prof. Dr. Ir. Chandrawati Cahyani, MS (UB – Indonesia)
Prof. Dr. drh. Aulanniam, DES (UB – Indonesia)
Prof. Dr. Loekito Soehono, M.Agr (UB – Indonesia)
Prof. Petr Solich (Charles University – Rep. of Czech)
Assoc. Prof. Stuart R. Batten (Monash University – Australia)
Dr. Masayuki Sano (AIST – Japan)
Dr. Edgar Paski (British Columbia Institute of Technology – Canada)

Board of Editors

Dr. Hermin Sulistyarti (UB – Indonesia) – *Editor in chief*
Prof. Mick O’Neill (Advisory and Training Service Pty, Ltd – Australia)
Prof. Petr Solich (Charles University – Rep. of Czech)
Dr. Edgar Paski (British Columbia Institute of Technology – Canada)
Dr. Francois Malherbe (Swinburne University of Technology - Australia)
Dr. Lilibeth dL. Coe (University of the Philiphine - Philiphine)
Dr. Verasak (King Mongkut's University of Technology - Thailand)
Zubaidah Ningsih, M. Phil (UB – Indonesia)
Irfan Mustafa, MSi (UB – Indonesia)
Yuniar Ponco Prananto, MSc (UB – Indonesia)

Design and Layout

Hary Agustiawan
Armeida Dwi Ridhowati Madjid

Publisher:

Galaxy Science Publisher, Malang, Indonesia

ISBN: 978-602-97628-5-3



Table of Content

Preface	i
Message from President of ICBS 2011	ii
Message from the Dean of Science Faculty of UB	iii
Table of Content	iv
Part A. Health Section	
A.1. Oral Presentation	1 – 106
A.2. Poster Presentation	107 – 181
Part B. Environment Section	
B.1. Oral Presentation	182 – 299
B.2. Poster Presentation	300 – 366
Part C. Advance Technology Section	
C.1. Oral Presentation	367 – 490
C.2. Poster Presentation	490 – 617
<i>Erratum</i>	618 – 619
Bibliography of First Author	xvi
Sponsorships	xxiii

Development of Radionuclide Monitoring Stations in Indonesia in Anticipating the Increasing of Peaceful Uses of Nuclear Energy in ASEAN Region - An Initial Assessment Susilo Widodo, Syarbaini, Dadong Iskandar, Bunawas	275
Diversity, Composition, and Community Structure of the Teak Canopy Arthropods in Porang Crop Area Saradan Forest, Madiun, East Java Syahrudin Agung Permana, Amin Setyo Leksono, Bagyo Yanuwadi.....	280
Biology of Fungi's Pelawan Tree (<i>Tristaniopsis Merguensis</i>) Triadiati, Anastasia Raditya Hidayanti, Nampiah Sukarno.....	281
Mathematical Model of Interactions Immune System with Micobacterium Tuberculosis Usman Pagalay, Marjono, Kusworini Handono, Agus Suryanto	282
Role of Wild Plant as Alternative Habitat for Natural Enemies in Agricultural Land Wiwin Maisyaroh, Bagyo Yanuwadi, Amin Setyo L., Zulfaidah P.Gama	290
Biosorption Phenomena of Heavy Metals and Radionuclides by Dispersed Bacterial Extracelular Polymeric Substances Zainus Salimin, Endang Nuraeni	294
B.2. Poster Presentation	300 - 366
The Study of Phosphate Released from Aquatic Sediment and Its Effect on Algal Growth Asep Saefumillah, Nining Betawati Prihantini, Dini Damayanti, Zaenab Sahamiddina.....	300
Normative Law Dimension Introduction of Variety Description for Pests and Plant Disease in Sustainable Food Crop Cultivation Bambang Sudjito.....	301
Approach Method Self Organizing Maps (SOM) for Grouping Zone Season (ZOM) District Ngawi and Accuracy Evaluation Method ZOM with General Regression Neural Network (GRNN) Bambang Widjanarko Otok, Muhammad Sjahid Akbar, Agnisa Bhakti Persada	307
Biosorption of Lead(II) And Cadmium(II) by Biomass of <i>Azolla Microphylla</i>-Silica in Continuous System Dinar Purwonugroho, Sri Wardhani, Darjito, Deasi Ari Shandi , Descaniati Chan.....	312
Variation Shape and Color of Gland from Genus <i>Orophea</i> (Annonaceae) in Purwodadi Botanical Garden Dewi Ayu Lestari	315
Single Nucleotide Polymorphism Identification of Porang in East Java Estri Laras Arumingtyas	319
Logging Impact to Diversity of Epiphytes at Malinau Research Forest (MRF)-CIFOR Malinau Regency Ismail, Akas Pinarangan Sujalu.....	320
The Comparative Air Analysis of the Institute of Chemistry, UP Diliman using Passive Sampler with Activated Charcoal and Commercially Available Adsorbent Lilibeth dLC. Co , Christian Mark G. Salvador , Abegail Z. Rasco.....	325
Synthesis and Characterization of Nickel(II) doped Calcium Tartrate Tetrahydrate	

Logging Impact to Diversity of Epiphytes at Malinau Research Forest (MRF)-CIFOR Malinau Regency

Ismail¹, Akas Pinarangan Sujalu²

^(1,2) Forest Management, Faculty of Agriculture, University of 17 Agustus 1945, Samarinda, East Kalimantan, Indonesia (pinaringan_b@yahoo.co.id)

Abstract

The aim from this research is to find out impact of the 6 years after logging to the various kinds of epiphytes and its porophyte in the climax forest to the broadness of 6 hectares and the log over area to the broadness of 12 hectares at Malinau Research Forest (MRF-CIFOR) the village of Seturan – district of Long Loreh, the regency of Malinau. In the climax forest it could be found 8009 or 11.5 individual epiphytes of each porophytes, in log over area being found 4671 or 6,7 individual epiphytes of each porophytes. Bring about of degradation sum of individual 71.1% and species 18.1%. The porophyte in the climax forest to the amount of 696 trees are consisting of 179 species in 85 genera of 39 families, with 417 trees (59.9%) each of them has a diameter runs 36-67 cm, whereas in the log over area being found 610 trees consisting of 162 species in 101 genera of 42 families with 484 trees (79.9%) each of them has got a diameter runs from 20-51 cm.

Keywords: climax forest, log over area, microclimate, epiphyte.

1. Introduction

Influence of plants in a community became very important with the increasingly large size of plants and increasing numbers of plants. In the early growth phase, plants, micro-climate is only influenced by it, but then gradually affected by meso-and macro-climate. Plants, either individual or in a group, are seen as something complex and sensitive to changes in climate elements [1].

Conditions and the availability of the elements of a favorable climate are very important for the regeneration and establishment of forest formations. Conversely canopy closure condition of an expanse of forest stands will affect the fluctuation of the elements of microclimate, so that every form of life in the forest ecosystem components including plants have different abilities in terms of meeting needs for environmental conditions including light, humidity, air temperature and climate elements other. Therefore, differences in the fulfillment of the necessities of life can form a community of plants that have certain characteristics [2].

Forests and climate are two components that is related both macro and especially micro. Changes in any one of these components are directly or indirectly affect the other component [2]. Vegetation that grows in rain forests to produce micro-climate which is three dimensional and very complex, in this collection significantly umbrella canopy formed naturally produces micro-climatic conditions under the canopy were significantly different compared with the micro-

climate outside the forest and especially in open land. Most micro-climatic conditions are very different types of rain forests and varied vertically from the top of the canopy to the forest floor, and horizontally from one location to another in an "umbrella" of forest canopies [3].

2. Experimental Detail

Research Areas

The details are described by Machfudh and Kartawinata [4], as follows:

1. Location

The experiment was conducted at the climax forest and logged-over forest at the Forest Research Station Bulungan Research Forest (BRF) - Center for International Forestry Research (CIFOR), village-subdistrict Seturan Long Loreh in Malinau (180 km from the town of Malinau). Size total acreage of Forest Research Bulungan (BRF-CIFOR) is approximately 321 000 hectares. The observation in 1997 to use the Landsat TM-5 showed a wet tropical forest in the area of Research Station Forest-CIFOR BRF Seturan consists of climax forest (97.84%), secondary forest (2:12%) and the open land (0.04%).

2. Topography

Topographic conditions of the area of Forest Research Station BRF - CIFOR Malinau Seturan-hilly, located at an altitude between 100-300 m above sea level, with slopes varying between 10% - 70%. While 40% of the total BRF

area has slopes between 25-40% (including in Seturan), while areas with greater slope (steep to very steep) lots located on the west and southwest. Based on data obtained by using the Digital Elevation Model (DEM) from satellite Radarsat can be obtained information that the 84.24% area of BRF is hilly area with altitude of more than 300 m above sea level. An 11.43% is an area with undulating topography, with little there is a flat area.

3. Climate

Climate data have been obtained from PT Inhutani II Unit Malinau show that the forest areas managed by the BRF-CIFOR and its surroundings are included in the precipitation type A on the basis of Schmidt and Fergusson [5] with dry periods of less than two months and wet months over nine months, the average rainfall was recorded around 3790 annual mm/year.

Permanent sample plots at the Forest Research Area BRF Seturan CIFOR Malinau [4]

Dipterocarpaceae forest Lowland is a major extensive forest type contained in the BRF, very rich with trees that have a 35-40 m tall, dominated by trees with ≥ 10 cm a diameter tribes, particularly Meranti (*Shorea* sp.), Keruing (*Dipterocarpus* sp.) and Merawan (*Hopea* sp.). *Agathis borneensis*, are commonly found growing in forests with sandy soils in the BRF area, apart from that are commonly found in species of Fabaceae, especially *Koompassia excelsa*, or called "Bengeris" or "honey tree" by local residents.

Number of permanent sample plots in the plot (PSP) in the BRF-CIFOR totaling 24 plots, each measuring 100m x 100m (1 hectare), and the whole is a mixed forest Dipterocarpeceae. PSP location is located approximately 30 km east of Forest Research station BRF-CIFOR.

3. Result and Discussion

Microclimate Forest

Observations of climate elements using Data Logger that records every 5 minutes automatic, to know his condition at the climax forests and logged-over forests, in locations that are still often found epiphytic. The observation is presented in Figure 1 and 2 (Appendixes).

Condition of the elements vertically on the microclimate of forest stands or tree has been described by Sujalu (1999) who quoted from Walsh (1952) and Geiger (1959) [3,6] that the micro-climate conditions most of the rain forest type is very different and very varied vertically from the top canopy to the forest floor, and

horizontally from one location to another within a forest canopy umbrella. While in the woods differs between the various sizes hiatus, between the forest growing and forest climax. In the rain forest, the intensity of light reaching the forest floor is very low compared to the peak (above) canopies. The maximum air temperature and the average is also lower in the forest floor with air humidity (RH) is always higher than in the forest canopies.

According to Daniel [7], quoting from Larcher (1975), the reduction of the number of transmissions (interception) of light through the forest canopy depends on canopy types, shapes and canopy strata, and the homogeneity of canopies. Because of the high intensity of light available at different strata within a forest stand is very influential on the size of species dominance, diversity of vegetation, canopy class differentiation, the ratio of live crown and crown overall dimensions. So, if the requirements of the lighting needs of plants will be known, then it can be controlled stand structure and productivity, regeneration type, etc.

Conditions elements in a vertical micro-climate are very determine the diversity of other life forms found on a tree. In a forest stand type formation, composition and diversity of epiphytes is different for each different height in a host tree. Composition and vertical distribution of epiphytic vegetation is primarily determined by the variability microhabitat while its characteristics are determined by the humidity and lighting under the canopy [8].

Table 2 shows the diversity of epiphytes in the forest climax and the LOA. Mean while, Table 1 shows the number of individuals and the number of epiphytic species that does not always follow the changes in the levels of micro-climatic conditions of the same. Changes in air temperature and light intensity on a daily average at each show the lower strata of the canopy to the base of the tree turned out to produce the conditions change in the number of epiphytic species from the canopy to the base of trees but is not accompanied by changes in the number of epiphyte individuals / ha. These conditions are not the same as that found in the LOA to those in Table 2. That situation has been explained that the diversity of vegetation on the vertical structure of forest stands or on a tree is formed as regulated by the availability of lighting vertically as well. That situation has been explained that the diversity of vegetation on the vertical structure of forest stands or on a tree is formed as regulated by the availability of lighting vertically as well.

Species composition and community structure of epiphytes is strongly influenced by fluctuations in environmental factors, so that environmental factors are the most important component because it affects the stability of the forest interior environment, especially the components that maintain stable levels of bark wetness and this means a relatively fixed rate sunlight penetration so that the percentage of sunlight blocked by every strata of the forest canopy is also relatively not change [9].

Logging activity can affect the presence of epiphytic through changes in canopy closure and depreciation, which would lead to the condition of the elements of interior forest microclimate changed suddenly and lasts a long time especially penetration of sunlight, temperature and humidity, which will potentially affect abundance and distribution of species [9-11].

4. Conclusion

Air temperature and average daily radiation on canopy is always higher than the other trees; on the contrary there is always the highest air humidity at the base of the tree. Air temperature and radiation conditions of daily average in the LOA is higher than in the climactic forests, instead of air humidity on the daily average is higher than the climactic forest LOA.

Logging activities have caused degradation number of individuals and number of epiphytic species.

5. Acknowledgements

6. References

- [1]. Marjenah (2000), derived from Tjasjono (1999),
- [2]. Sujalu, A.P. (1999), *Iklm Mikro Hutan. Makalah Pendidikan dan Latihan Perlindungan & Konservasi Hutan Tropis. Kerjasama antara Dirjen PHPA dengan Fakultas Kehutanan Universitas Mulawarman.*
- [3]. Walsh, R.P.D. (1952), *Microclimate and Hydrology.* in Richards, P.W. (1952), *Tropical Rain Forest an Ecological Study.* Cambridge University Press. Cambridge. 187-208
- [4]. Machfudh and K. Kartawinata (2001), *A Guide To The Bulungan/Malinau Research Forest. Bulungan Research Forest Field Guide Series No. 3. CIFOR-Bogor.* 36
- [5]. Schmidt and Fergusson (1952),
- [6]. Geiger, R. (1959), *The Climate Near the Ground. Blue Hill Meteorological Observation.* Harvard University Press. Cambridge – Massachusetts, 309-316.
- [7]. Daniel (1992),
- [8]. Malcolm (1995),
- [9]. Sutton, S.L., T.C. Whitmore, and A.C. Chadwick (1983), *Tropical Rain Forest: Ecological and Management.* Blackwell Scientific Publishing. 11-22.
- [10]. Wolf, J.H.D. (1994), *Factors Controlling The Distribution of Vascular and Non-Vascular Epiphytics in The Northern Andes. Vegetation* 112. 15-28.
- [11]. Hazell (1998),
- [12]. Catling, P.M. and Lefkovitch, L.P. (1989). *Association of Vascular Epiphytes In A Guatemala Cloud Forest. Biotropica* 21: 35-40.
- [13]. Chadwick, A.C., S.L. Sutton and T.C. Whitmore (1983). *Tropical Rain Forest: Ecological and Management.* Blackwell Scientific Publications. Oxford University, 11–15.
- [14]. Claudio, R. (1999), *Reduced Impact Logging Effects On Commercial Non-Vascular Pendant Epiphyte Biomass In a Tropical Montane Forest In Costa Rica. Forest Ecology and Management* 118, 117-125.
- [15]. Griffiths, J. F. (1976), *Climate and the Environment; The Atmospheric Impact On Man.* The Camelot Press Ltd. Southampton. Great Britain. 316.
- [16]. Ingram, S. and Nadkarni, N. (1993). *Composition and Distribution of Epiphytic Organic Matter in a Neotropical Cloud Forest, Costa Rica. Biotropica* 25: 370 – 383.
- [17]. Mitchell, A. (1989), *Between the Trees - The Canopy Community.* dalam Silcock, L. 1989. *The Rainforest: A celebration.* The Living Earth Foundation. 153-157. Cresset Press. London.
- [18]. Parker, G. G. (1995), *Structure and Microclimate of Forest canopies.* In M.D. Lowman and N.M. Nadkarni (Eds.). *Forest Canopies.* 73 -106. Academic Press. San Diego. California.
- [19]. Rosenberg, N.J. (1984), *Microclimate: The Ecological Environment.* John Willey & Sons. New York. 2-4.
- [20]. Walter, H. (1971). *Vegetation of the Earth in Relation to Climate and Ecophysiological Condition.* The English University Press Ltd. London. 186.

Appendixes

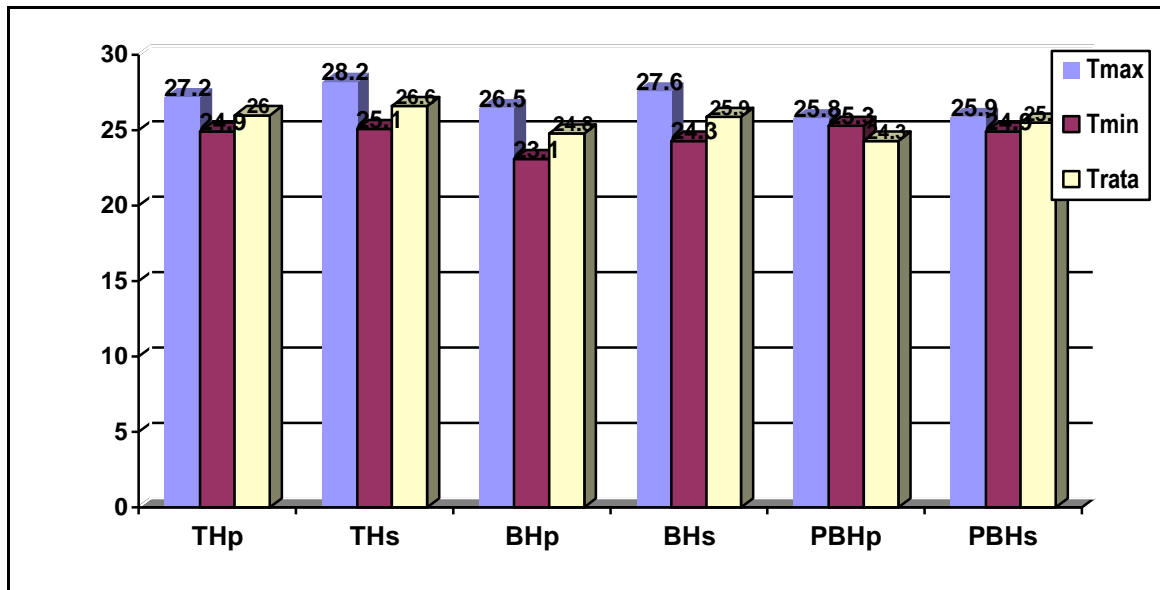


Figure 1. Conditions Temperature (C) at Climax Forest and Secondary Forest

Description: THP: Crown Climax forest; THS; Heading Secondary Forest; BHP: Trunk Climax forest, BHs: Trunk Secondary Forest; PBHs: Jetty Climax forest Trunk; PBHs: Base of Secondary Forest Trunk.

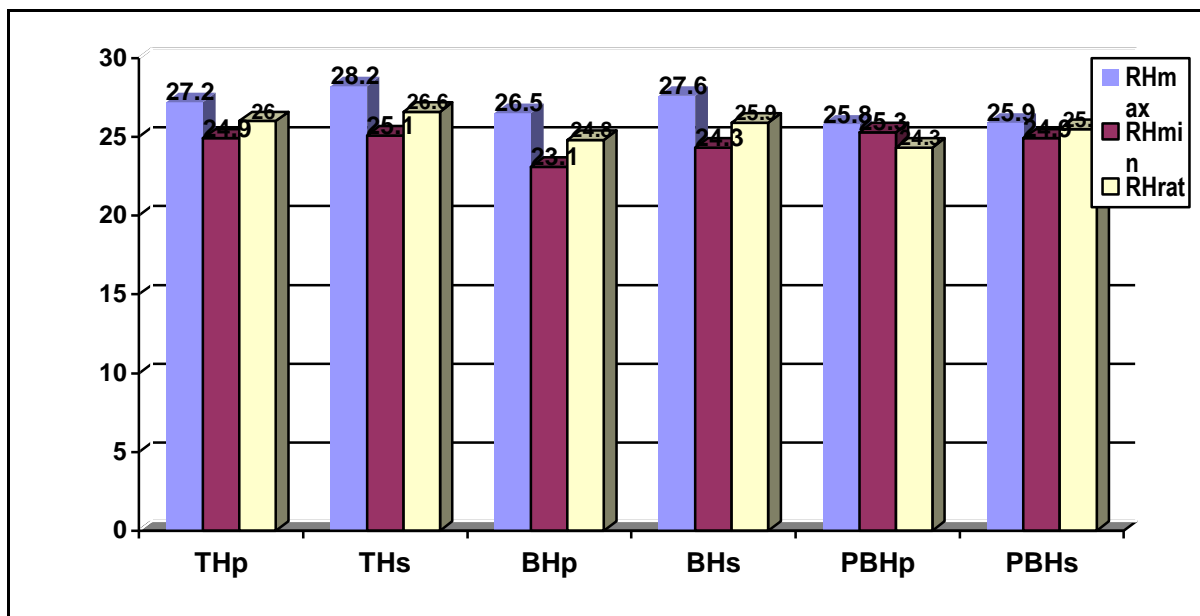


Figure 2. Conditions of Relative Humidity (%) at Primary and Secondary Forest

Description: THP: Crown Climax forest; THS; Heading Secondary Forest; BHP: Trunk Climax forest, BHs: Trunk Secondary Forest; PBHs: Jetty Climax forest Trunk; PBHs: Base of Secondary Forest Trunk